



ROTATE

The Official Monthly Publication of St. Louis Radio Control Flying Association

JULY 2017

SLRCFA'S

Model Aviation Airshow Recap



SLRCFA's Model Aviation Airshow, June 3rd-4th was well attended by both spectators and pilots. SLRCFA was once again featured on [Fox2 News](#) boosting our spectator attendance. We had two beautiful days with moderate temperatures and mild winds. This year the Concession stand added a new item, pulled pork and food sales were exceptional. SLRCFA also implemented a new program "QuickStart" for new or "been away from the hobby for a while" RC pilots. We offered a discounted membership for the first year and free training. The new QuickStart members are allowed to exercise membership privileges after they have been signed off by one of our instructors. We gained 10 new members with this new program!! See over 500 event pictures [here](#).

SLRCFA

Visitor Information

Have you been out at the field and had a visitor ask you about the Club or interested in the hobby? Sure, we all have had this happen. SLRCFA has a Flyer holder located under the pavilion near the Electrical Panel. This container is filled with upcoming event flyers and club brochures, flyers, and Business Cards. Please utilize this to give our guests information about our club. Make them aware of our QuickStart Program as well.

facebook



Want to stay up to date with all of the happenings at SLRCFA? Well visit SLRCFA's extremely active facebook page managed by Jonathon Hendrickson, Marshall Henley, and Geoff Biderman. SLRCFA's facebook page is constantly being updated with up to the minute news and even LIVE streaming video. Don't miss out on what is happening at the field. For the most current news and information, check out our [facebook page](#) and "like" it if to add us to your News Feed!!

SLRCFA Board Meeting Minutes

SLRCFA's Board meeting Minutes are located in the members only section of our website. To access the minutes, log in then go to the members only tab and then select the Board Minutes.

While you are there checking out the minutes, take a minute to explore our website and all it has to offer.



Indoor Flying

Has the weather been keeping you from flying? There is a solution close to home. Many SLRCFA members have been flying Friday nights 6-9pm indoors at the Central Baptist Church in Eureka, MO. All are welcome to fly for \$5 a night, but must be a current AMA member (SLRCFA membership not required). It's a great way to brush up on your flying skills, not weather dependent, and Fun!!

Contact: Ron Lawson 636-677-1247 for details

SLRCFA's Documents

Over the last several years, SLRCFA's governing documents have been edited many times. This has left the documents with several holes and discontinuity. The 2017 SLRCFA Board of Directors and its sub committees (Teams) have tackled of an overhaul of all of these documents except the constitution already this year!! The goal is to streamline all the governing documents while accommodating for the future.

The updated Field Rules, Operating Procedures, (Newly adopted) Pilot Communication, and AMA rules have been prominently posted at the field in the newly installed Bulletin Board, which is located on the opposite side of the circuit breaker panel structure. Please review the new documents on your next trip to the field, online, or on the last pages of Rotate.



SLRCFA Seeking Newsletter Editor



SLRCFA is seeking a new Newsletter Editor. The Newsletter Editor is responsible for publishing "Rotate" once a month. If you are a SLRCFA member, enjoy writing short articles, and would like to add a breath of fresh air into our Club's Newsletter, "Rotate" contact [Jonathon Hendrickson](#) for more information.





SuperFly v3 is going down in the Midwest for the first time on September 29 thru October 1st 2017! St Louis R/C Flying Association has agreed to host the SuperFly this fall. That is right we are going to the center of the country. For first time SuperFly participants here is the 411. Over the past decade or so there has been a trend of segregated flying events based on the type of aircraft and flying style. What that accomplished is lower attendance and in fighting between fellow modelers over foolish things. SuperFly event series vision is to bring us all together and have fun with fellow R/C junkies. Large scale turbine vs EDF micro jet, Foam vs Balsa, 3d vs warbirds, Electric vs Fuel, etc, etc. We have proven all of those can play at the same venue and actually find out we all love model aviation! Big question mark for most is how do you control the flight line. The answer is simple we don't you guys do. Got a group of your buddies wanting to fly a warbird gaggle? No problem just get in line and let the fellows know that is your plan. Ask to please give us a few minutes doing formation worm burners. We are all sharing the same passion and it will blow

you away how much fun this event concept has proven to be. The flying site is hands down the premier flying location in the midwest. You can check out more at the clubs website link <http://www.slrcfa.com> We have some videos of the flying site below and it is absolutely breathtaking. These guys know how to do it and they will have a huge crowd of spectators to show off your masterpieces for. Speaking of that the awards will be very unique and hotly contested to win for the man cave ego wall. All custom made specifically for the SuperFly. Ten different categories and every one will be decided by peer judges. Best of Show, Best Military, Best Jet, Best Civilian, Best Aerobatic, Best Smoke, Best Electric, Best Covering, Best Kit or Scratch Built, Best Static Display Night time fun is on tap and has proven to be a highlight of the weekend. A SuperFly original, All the Fun Fly contest happen at night under the light towers! Back by overwhelming popular demand is the night pylon races. Having the fastest airplane doesn't really mean much in this event. All of the fun fly events are structured so any type of airplane will be very competitive. The last pylon race was won by a Super Cub! See everyone this fall and remember if it flies bring it. Balsa gliders and up from there!





- July 5th, 7:30pm SLRCFA Board Meeting @ Saint Louis County Library Eureka Hills Branch 156 Eureka Towne CTR, Eureka Mo 63025
- July 15th Midwest Air Wing Big Bird Fly-in
- July 20th, SLRCFA Club Meeting, 7:30pm, SLRCFA Flying Field
- August 2nd, 7:30pm SLRCFA Board Meeting @ Saint Louis County Library Eureka Hills Branch 156 Eureka Towne CTR, Eureka Mo 63025
- August 17th, SLRCFA Club Meeting, 7:30pm, SLRCFA Flying Field
- September 6th SLRCFA Board Meeting, 7:30-9pm Eureka Community Center 333 Bald Hill Rd, Eureka, MO 63025.
- September 21st SLRCFA Club Meeting, 7:30pm, SLRCFA Flying Field
- September 30-October 1st, SLRCFA SuperFly
- October 4th, SLRCFA Board Meeting, 7:30-9pm Eureka Community Center 333 Bald Hill Rd, Eureka, MO 63025.
- October 7th (8th rain date) SLRCFA, Warbirds and Civilian Scale
- October (TBD) SLRCFA, Toys For Tots/Chili Fly
- November 1st, SLRCFA Board Meeting, 7:30-9pm Eureka Community Center 333 Bald Hill Rd, Eureka, MO 63025.



GENERAL INFORMATION

2017 Board of Directors

Jonathon Hendrickson, President, Newsletter Editor	815.222.5790
Marshall Henley, Vice President, Webmaster	314.378.8663
Shane Eisenbach, Secretary	314.226.4231
Dennis Chivetta, Treasurer	636.391.8071
Jim Beerman, Director	636.390.4461
Geoff Biderman, Director	314.221.5985
George Biderman, Director	314.821.8554
John K. DeLuca, Director	636.394.1581
Barry Klussman, Director	636.390.3744
Allen Main, Director	636.913.0837
Mark Stellern, Director	636.458.4874
Mike Stellern, Director	636.458.0006

Club Information

The newsletter, *Rotate* is a monthly publication of the St. Louis Radio Control Flying Association. Monthly General meetings are held on the 3rd Thursday of the month at 7:30 p.m. at the club field in warm weather. The Club's private field is located at 788 Augustine Road, Eureka, Missouri. Guest/members are welcome to attend the Board meeting the 1st Wednesday or Thursday of the month. See "Upcoming Events" in *Rotate* for Dates, Times, and Location.

Flying Instructors List

Jonathon Hendrickson	815.222.5790
Dennis Chivetta	636.391.8071
Mark Stellern	636.458.4874
Mike Stellern	636.458.0006

2017 Membership Dues

Full Membership	\$195
Prime Membership (Equivalent to FULL membership. Includes additional benefits published on SLRCFA.com)	
	\$250
Junior Membership (23 years old and under. No voting rights)	\$25
Spouse Membership (Legal spouse of current FULL or PRIME member.)	\$25
Dual Membership (Open to all members of ANY other RC flying club excluding Buder park flying permits. Must not have been a SLRCFA FULL member within the last 2 years. No voting rights. Must present current membership credentials for their primary club before being accepted into SLRCFA.)	
	\$125
Associate Membership (Primary residence of member is greater than 75 miles from SLRCFA field (road miles). No Voting Rights.)	
	\$95

SLRCFA membership is capped at 100 members

No More than 20 Dual or Associate members will be accepted into our club without board approval

Join or Renew Online @ www.slrcfa.com or by Mail. Make checks payable to **SLRCFA**. Mail to Dennis Chivetta, Treasurer St. Louis RC Flying association, 187 Brightfield Drive, Ballwin, Missouri 63011. Any questions call 636.391.8071.



SLRCFA MEMBERS SUPPORT THOSE WHO SUPPORT YOU

Schaefer's Hobbies, Arts and Crafts



11659 Gravois Road,
St. Louis, MO 63126
Phone 314 729 7077

*Just East of Lindbergh,
Opposite the Gravois post Office*

Radio Control Airplanes, Boats and Cars
www.schaeferhobby.com

 **Mark Twain
Hobby Center**
ST Charles MO *For All the BEST for Your Hobbies*

2793 West Clay Street
St. Charles MO 63301
636-946-2816

Monday through Saturday - 9:30am to 9:00 pm
Sunday - 12:00 to 4:30 pm
www.hobby1.com



FIELD RULES

St. Louis Radio Control Flying Association

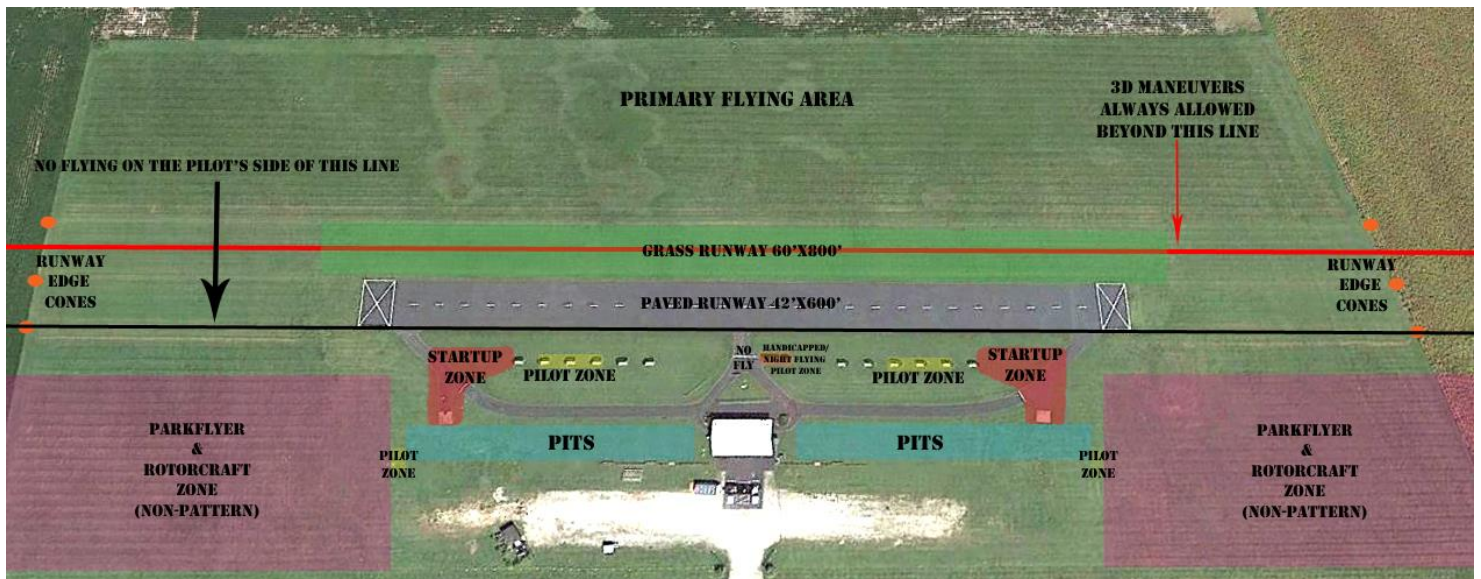
April 5th, 2017

1. Only members and guests of the Saint Louis Radio Control Flying Association with current Academy of Model Aeronautics (AMA) membership cards are permitted to fly at this site. SLRCFA members are required to have their membership cards on their person and visible while at the field. All pilots **must** wear their membership card when flying.
2. The Official AMA rules and regulation shall be applicable to all flying activities at this field. In situations where specific guidance is not provided, sound judgment and common sense shall prevail.
3. Per FAA requirements, ALL aircraft should have their FAA sUAS number visible. (can be inside of the aircraft if accessible without the use of tools)
4. Only narrow banded Radio Control systems are permitted to operate at this flying site and all pilots will have completed a successful radio equipment ground check before the first flight of a new or repaired model. (It is suggested that each day prior to flying, ground checks are conducted and that prior to each flight transmitter/receiver function be verified.) SLRCFA is a 2.4GHz preferred flying site. All other frequencies of operation (72MHz, 27MHz, 50 and 54 MHz) may be used at the pilot's own risk. However the use of a frequency pin to identify the frequency in use is highly recommended. Pins, often clothespins, can be marked with the color or channel number of the frequencies they represent and should be placed on the provided flight-line control board when in use.
5. **No** more than **six** aircraft are allowed to fly at one time in the primary flying area.
6. Piston and turbine engines are not permitted to run before **9:30AM** or after **10:00PM**.
7. **All** piston engines are required to have a muffler. All engines except turbines shall not exceed a sound limit level of 96 decibels (measured from 25 feet perpendicular to the aircraft on a hard surface). Propeller driven aircraft should not "rip the prop."
8. Pilots shall **not** fly new or rebuilt model aircraft until the aircraft has been inspected and approved by two other club members.
9. No fueling or starting engines from under the pavilion or in front of the pavilion. ALL planes must be started from the concrete starting pads at the ends of the runway, from flight stands or using personal hold downs. Personal hold-downs and flight stands must be located by the one of the two starting pads in the startup zones. Electric Airplanes should not be armed until they are beyond the white taxi lines or are located in the startup zone. See Diagram (**Startup Zone**).
10. Takeoffs and Landings are permitted on the paved or grass runways only. Taxiing out to the runways is permitted, provided it's past the white lines at either end of the runway.
11. **Primary flying area** pilots must stand in the designated **Pilot Zone** (behind flight stations #2-4 on either end of the runway dictated by the wind direction.) Only one Pilot Zone may be used at any time. Absolutely no flying from the center of the runway. Pilots entering the pilot zone should stand as close as practical to the other pilots already flying. Pilots may fly outside of the Pilot Zone **only if** they are flying an aircraft deemed to have a pilot-challenging take-off or landing characteristics and have established clear verbal communication with ALL pilots in the air and receives their acceptance and awareness of the challenging aircraft. All Pilots are encouraged to utilize a spotter.
12. The **Handicapped Pilot Zone** is only to be utilized by individuals requiring mobility assistance. (wheelchairs, crutches, canes, walkers, or similar devises) **Utilizing a spotter is mandatory**. If able, use one of the primary Pilot Zones.
13. FPV pilots must utilize a spotter at all times.
14. The first pilot to begin flying must establish a "left to right" or "right to left" takeoff and landing pattern. All subsequent pilots must follow the established pattern. Use clear verbal communication to identify the pattern if you are unsure. The pattern may only be changed during flight by an agreement among **ALL** pilots currently in the air using clear verbal communication.
15. Positively no flying over the pilot side of the runway, pit area, spectators or parking area. (Depicted as a black line. Marked by 2 Orange cones nearest to the pilot's stations at the property line) Landing out of the pattern is permitted only in cases of emergency. 3D maneuvers over the runway are only allowed **when all other pilots in the air agree to the practice**, established by clear verbal communication.
16. Low altitude, high speed passes are only permitted beyond an imaginary line represented by the outer edge of the asphalt runway
17. **Loudly and Clearly** announce your intentions with your plane of taxiing (coming out), taking off, and landing. Also announce your intentions when you need to cross the runway to retrieve an aircraft. **ALL pilots flying must**

acknowledge your callouts before proceeding with your intentions. Additional guidance is provided our *Pilot Communication* document.

18. All Helicopters and Multirotors (Rotorcraft) must be carried to and from the runway or rotorcraft zone. All hovering shall be conducted in a designated rotorcraft zone and forward pattern flight is **not** permitted from the hovering area. Rotorcraft forward pattern flight is permitted from the **Primary** flight line.
19. Pets may accompany SLRCFA members in accordance with St. Louis County Ordinances. ALL pets are the sole responsibility and liability of the pet's owner. Owners of unruly/dangerous pets, or pets exhibiting behavior that is potentially damaging to aircraft or facilities are required to remove the pet from the field.
20. **Night Flying** is permitted when in accordance with AMA rules. **Whenever the field flood lights are illuminated** (after sunset or before sunrise) **all pilots must fly from the Handicapped/Night Flying Pilot zone.**
21. Absolutely no talking on the phone while flying.
22. Any SLRCFA Member shall have the authority to enforce the rules herein. In most cases a simple warning will remedy a situation. However, if a pilot deliberately refuses to comply with a specific rule any SLRCFA member may file a grievance following the procedures listed in SLRCFA's Operating Procedures.
23. Repeated failure to comply with these rules and regulations by any member may result in termination of their membership in the Saint Louis Radio Control Flying Association pending a hearing by the Board of Directors of this Association. Process begins with a letter issued to the offender, member signs and returns the letter. Second infraction mandatory suspension or expulsion from SLRCFA to be determined by the SLRCFA Board of Directors.
24. These Rules and Components of these rules may be suspended or amended by AMA-Designated Contest Directors (CD) during AMA sanctioned events. For Non-Sanctioned events, these rules or components of these rules may only suspended for the duration of the event by an approved SLRCFA Board Motion or by a SLRCFA Board designated (Non-AMA-designated) Contest Director.

SLRCFA FIELD DIAGRAMS TO AID RULE INTERPRETATION





OPERATING PROCEDURES

St. Louis Radio Control Flying Association

April 5th, 2017

1. **Annual dues** are determined by the Board of Directors and published in the club's newsletter "ROTATE" and at SLRCFA.com. Membership is not considered active until receipt of payment of dues.

Full Membership	\$195
Prime Membership	\$250
Equivalent to FULL membership. Includes additional benefits published on SLRCFA.com.	
Junior Membership	\$25
23 years old and under. No voting rights.	
Spouse Membership	\$25
Legal spouse of current FULL or PRIME member.	
Dual Membership	\$125

- Open to all members of ANY other RC flying club (excluding Buder park flying permits)
- Must not have been a SLRCFA FULL member within the last 2 years.
- No voting rights
- Must present current membership credentials for their primary club before being accepted into SLRCFA.
- No More than 20 Dual or Associate members will be accepted into our club without board approval

Associate Membership	\$95
Primary residence of member is greater than 75 miles from SLRCFA field (road miles). No Voting Rights.	

- 1.1. Effective January 1, 2017 all membership payments must have been made by January 31st of the membership year to save your spot in the club. After January 31st, new members will be given priority.
- 1.2. New applicants, who join after August 1st, will be charged 50% of the FULL dues rate. Applicants who join after November 1st pay their full dues that apply to the following year, and receive November and December free.
- 1.3. Hardship requests: Applicants who have been a member of SLRCFA in good standing for at least one year may be considered for a hardship reduction of dues with a request made through an SLRCFA Board Member. Hardship request applicants will be considered on a case-by-case basis by the Board of Directors for the current membership year. Individual decisions will not be considered precedent.
2. **Field Closure**, for other than natural catastrophes, shall be decided by a simple majority of the Directors present and shall be scheduled so that the General Membership can be notified at least one week in advance through the club's website (www.slrcfa.com) or preferably through publication in the club's newsletter (Rotate) and social media.
3. **Field Maintenance**, the Board voted that ALL field maintenance issues (grass, runway, parking lot) are under the management of the appointed Field Grounds Committee. The Board of Directors must approve all field maintenance expenditures.
4. **Guests** are permitted to fly no more than two (2) visits a year and must be accompanied by a sponsoring member.
5. **Board Meetings**: Conduct for all SLRCFA Board of Directors meetings are outlined in the SLRCFA Board Meeting Rules of Order. Because time during board meetings is a valuable limited resource for the Board and Club Members, we have implemented these important rules. In that spirit, we ask that all members in attendance at the SLRCFA Board of Directors meetings help us maintain these rules of order.
6. **Grievance Procedure**: The grievance procedure provides a mechanism to enforce existing safety rules by providing a progressive disciplinary system when needed. Although most complaints can be resolved informally, if a complaint is serious or cannot be resolved informally, the matter should be referred to the SLRCFA Board of Directors for its consideration by means of a Grievance Form to be filled out and turned into a SLRCFA Officer. At least one witness is required to sign the Grievance Form (available at the field and at SLRCFA.com in the Rules & Safety section).
- 6.1. Any member receiving a Grievance, who directs any retaliatory action against the person, or persons, filing said Grievance, will be subject to disciplinary action. This is to include verbal or written threats, intimidation, physical harm, intentional equipment damage, or any other action deemed to be retaliatory by the Board of Directors.
- 6.2. Any grievance found to be a false accusation will result in disciplinary action against the accusers.
- 6.3. Grievance form:

